

# Interaction Diagram / AUML-2 Tool

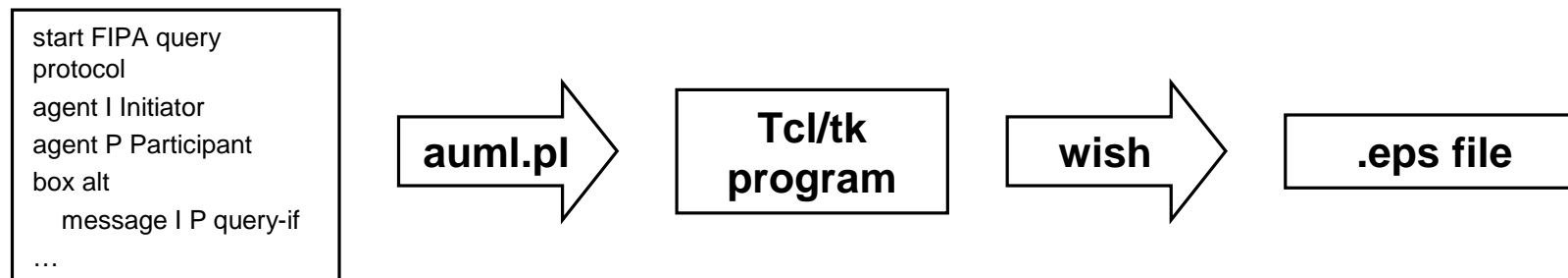
Michael Winikoff

August 2003

<http://www.cs.rmit.edu.au/~winikoff/auml>

# AUML2 Tool

- Rough prototype tool!
- Takes text and generates .eps generating layout automatically
  - .eps can be converted to other formats (jpg,png,...)
  - Does both AUML-2 subset and interaction diagrams
- Requires perl and tcl/tk (probably easiest on unix, but should also work under windows)
  - Requires available \$DISPLAY (unix)



# Input Format

- One command per line.
- Commands:

- **agent** *shortname longname*  
(also invis and role)

- **start** *protocol name*
- **finish**

} Leave these out for interaction diagrams

- **message** *from to message description*

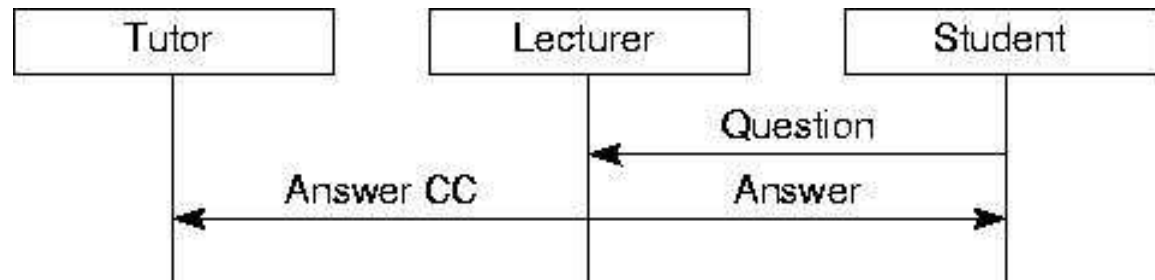
- **box** *type*

- **next**

- **end** *type*

- **backup**

```
agent T Tutor
agent L Lecturer
agent S Student
message S L Question
message L S Answer
backup
message L T Answer CC
```

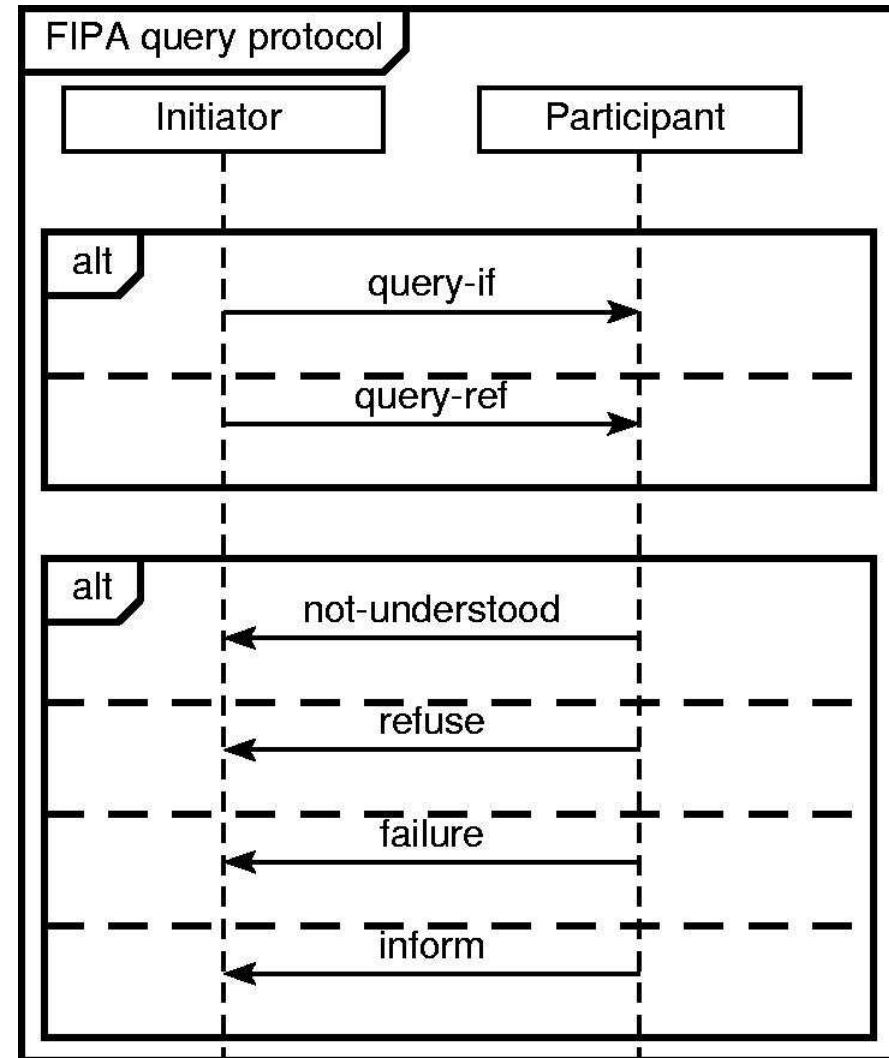


```

start FIPA query protocol
agent I Initiator
agent P Participant
box alt
  message I P query-if
next
  message I P query-ref
end alt
box alt
  message P I not-understood
next
  message P I refuse
next
  message P I failure
next
  message P I inform
end alt
finish

```

# Example



# Book Store Example

```
start Book Order
agent c Customer
agent s Sales ass.
agent w Warehouse man.
agent d Delivery manager
agent b Bank
message c s Request Book
message s w Price+availability
message w s response
message s c response
box alt
  message c s Cancel
next
  message c s Buy Book
  message s w Delivery Options?
  message w s Delivery info
  message s c Delivery info
  message c s Delivery Choice
```

```
message s c Payment details?
box alt
  message c s Cancel
next
  message c s Credit card info
  message s b Credit Check Request
  box alt
    message b s Not understood
  next
    message b s Not approved
  next
    message b s Approval
  message s w Order
  backup
  message s c Thanks
end alt
end alt
end alt
finish
```

