

Interaction Diagram / AUML-2 Tool

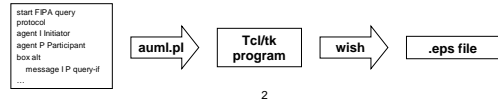
Michael Winikoff
August 2003

<http://www.cs.rmit.edu.au/~winikoff/auml>

1

AUML2 Tool

- Rough prototype tool!
- Takes text and generates .eps generating layout automatically
 - .eps can be converted to other formats (jpg,png,...)
 - Does both AUML-2 subset and interaction diagrams
- Requires perl and tcl/tk (probably easiest on unix, but should also work under windows)
 - Requires available \$DISPLAY (unix)



2

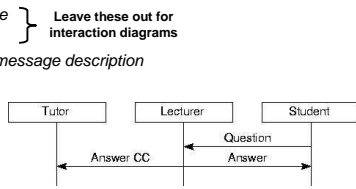
Input Format

- One command per line.
- Commands:

- agent *shortname longname* (also invis and role)
- start *protocol name*
- finish
- message *from to message description*
- box type
- next
- end type
- backup

```

agent T Tutor
agent L Lecturer
agent S Student
message S L Question
message L S Answer
backup
message L T Answer CC
    
```

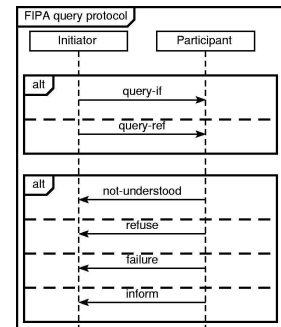


3

Example

```

start FIPA query protocol
agent I Initiator
agent P Participant
box alt
  message I P query-if
next
  message I P query-ref
end alt
box alt
  message P I not-understood
next
  message P I refuse
next
  message P I failure
next
  message P I inform
end alt
finish
    
```



4

Book Store Example

```

start Book Order
agent c Customer
agent s Sales ass.
agent w Warehouse man.
agent d Delivery manager
agent b Bank
message c s Request Book
message s w Price+availability
message w s response
message s c response
box alt
  message c s Cancel
next
  message c s Buy Book
message s w Delivery Options?
message w s Delivery info
message s c Delivery info
message c s Delivery Choice
message s c Payment details?
box alt
  message c s Cancel
next
  message c s Credit card info
next
  message c s Credit Check Request
next
  message b s Not understood
next
  message b s Not approved
next
  message b s Approval
message s w Order
backup
message s c Thanks
end alt
end alt
finish
    
```

5

